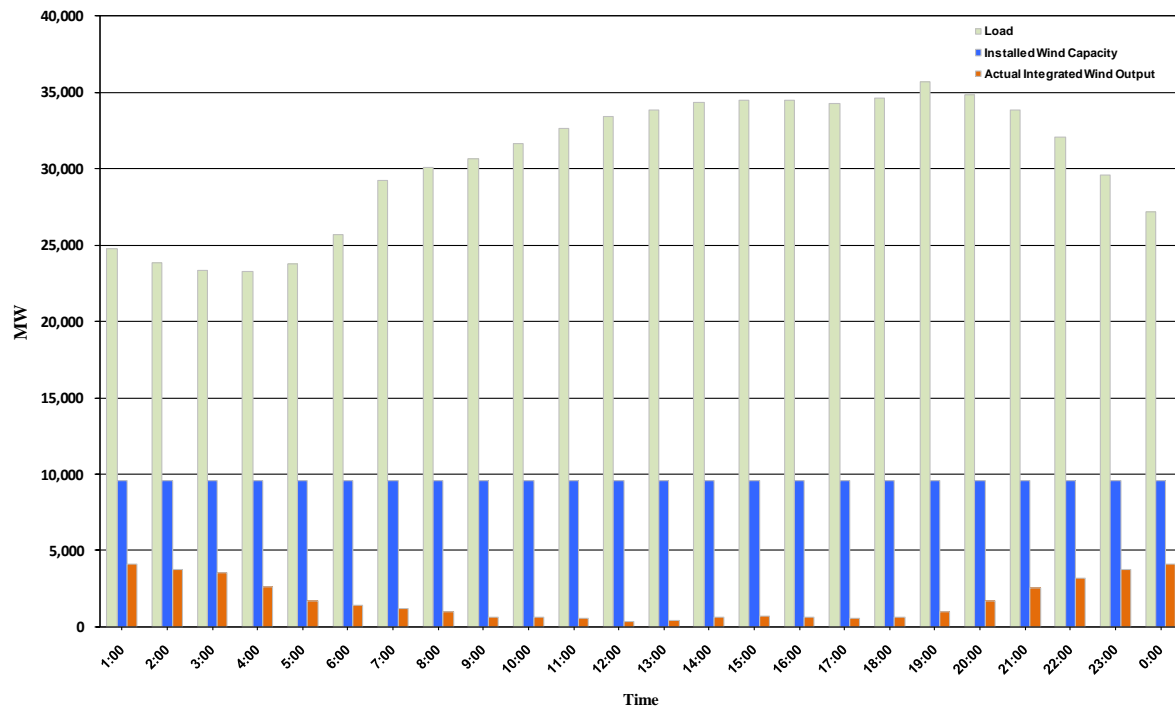




## ERCOT Grid Operations Wind Integration Report: 11/10/10

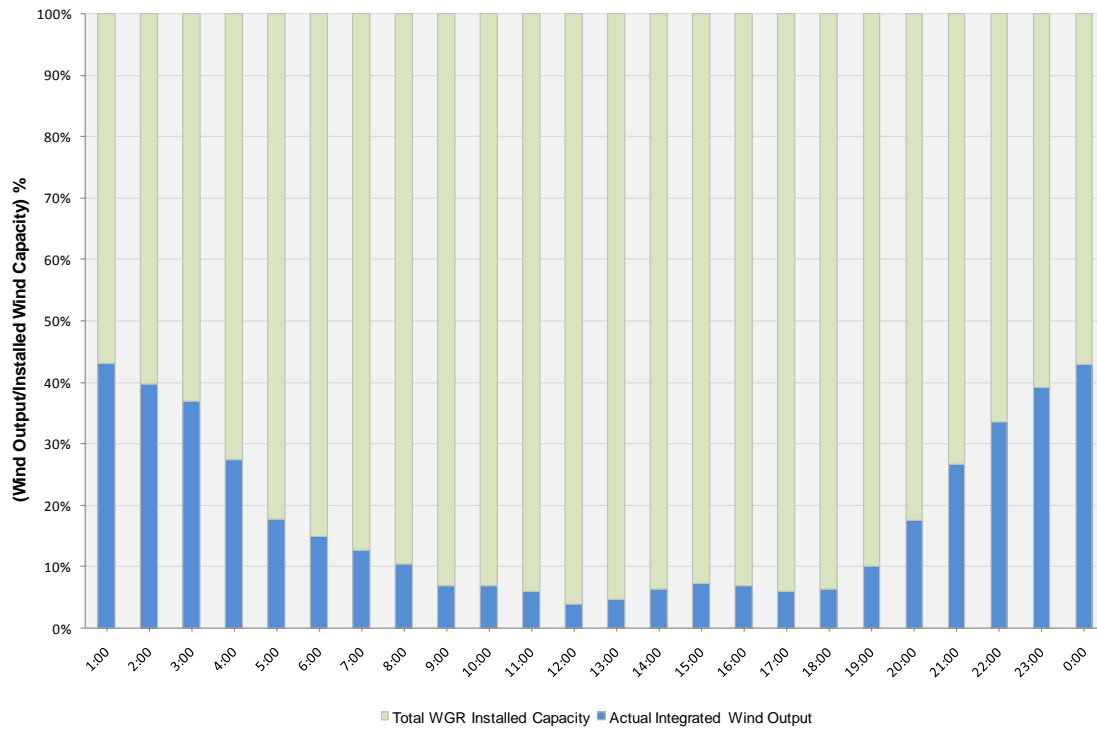
Peak Load	35,664 MW
Load Peak Hour	19
Wind Record 06/12/10	7016 MW
Max Wind value	4312 MW
Wind Peak Hour	00:00:12
Wind Integration %	17.02

Hourly Average Actual Load vs. Actual Wind Output  
11-10-2010

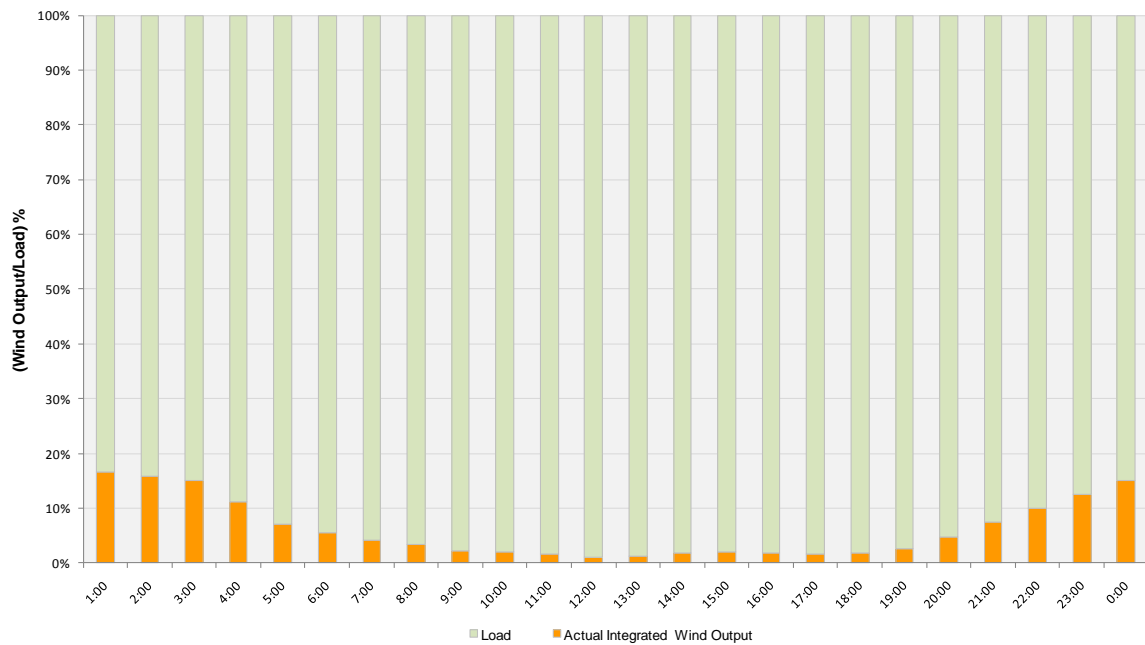




**Actual Wind Output as a Percentage of the Total Installed Wind Capacity**  
**11-10-2010**



**Actual Wind Output as a Percentage of the ERCOT Load**  
**11-10-2010**





ERCOT Load vs. Actual Wind Output 11/03/10 - 11/10/10

